

## Company Profile / Stock Information (As of December 31, 2018)

### Company Profile

Company name • Coca-Cola Bottlers Japan Holdings Inc.  
 Headquarters • Tokyo Midtown Tower, 9-7-1 Akasaka, Minato-ku, Tokyo, Japan  
 Registered office • 7-9-66 Hakozaiki, Higashi-ku, Fukuoka, Japan  
 Establishment • December 20, 1960\*1  
 Paid-in capital • JPY 15,232 million  
 Number of employees (consolidated) • 17,100  
 Securities Code • 2579  
 Authorized Shares • 500,000 thousand shares  
 Outstanding Shares • 206,269 thousand shares\*2  
 Number of Shareholders • 66,260  
 Number of Shares per Trading Unit • 100 shares  
 Stock Exchange Listings • Tokyo Stock Exchange (First Section) Fukuoka Stock Exchange

\*1 As of January 1, 2018, the company name was changed to Coca-Cola Bottlers Japan Holdings Inc.  
 \*2 Issued shares of the Company are common shares only. The Company has not issued preferred shares or any other types of shares which entail rights different from those of common shares.

### Major Shareholders

Shareholder	Number of Shares Held (Thousands)	Shareholding Ratio (%)
Coca-Cola (Japan) Co., Ltd.	27,956	15.2
The Master Trust Bank of Japan, Ltd. (Trust Account)	6,772	3.7
Japan Trustee Services Bank, Ltd. (Trust Account)	6,159	3.4
Toyo Seikan Group Holdings, Ltd.	5,607	3.1
Ichimura Foundation for New Technology	5,295	2.9
Satsuma Shuzo Co., Ltd.	4,699	2.6
Senshusha Co., Ltd.	4,088	2.2
Coca-Cola Holdings West Japan, Inc.	4,075	2.2
Mitsubishi Heavy Industries Machinery Systems, Ltd.	3,912	2.1
MCA Holdings Co., Ltd.	3,408	1.9

Note1: 22,793 thousand shares of treasury stock are not shown in the table above and are excluded from the calculation of shareholding ratios.  
 Note2: The Coca-Cola Company holds 18.4% through Coca-Cola (Japan) Co., Ltd., Coca-Cola Holdings West Japan, Inc., and other subsidiaries.

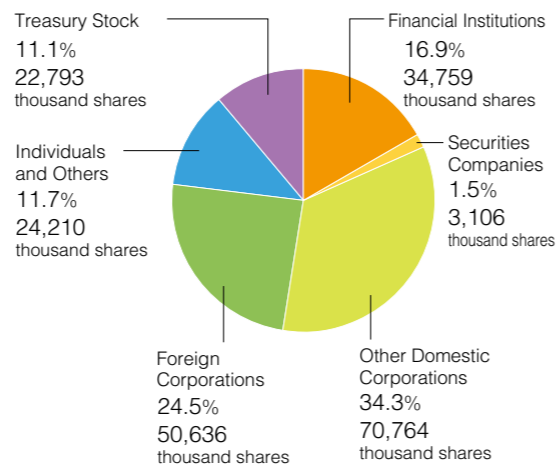
### Rating Information

	2012	2013	2014	2015	2016	2017	2018
Japan Credit Rating Agency, Ltd. (JCR) long-term issuer rating	AA-	AA-	AA-	AA-	AA-	AA-	AA-
Rating and Investment Information, Inc. (R&I) issuer rating	A+	A+	A+	A+	A+	A+	A+

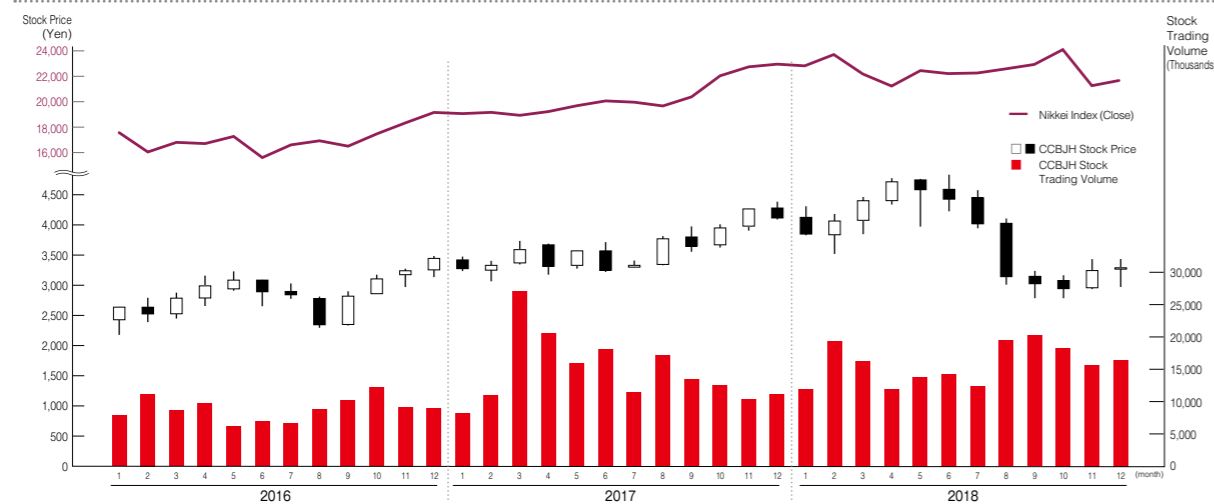
### Bond information

	Date of issue	Total amount issued (Million yen)	Coupon rate (%)	Maturity date
Coca-Cola West Co., Ltd. 2nd series	December 17, 2009	20,000	1.483	December 17, 2019
Coca-Cola West Co., Ltd. 3rd series	June 17, 2015	30,000	0.524	June 17, 2022
Coca-Cola East Japan Co., Ltd. 2nd series	December 14, 2015	16,000	0.276	December 14, 2020

### Composition of Shareholders



### Stock Price and Stock Trading Volume

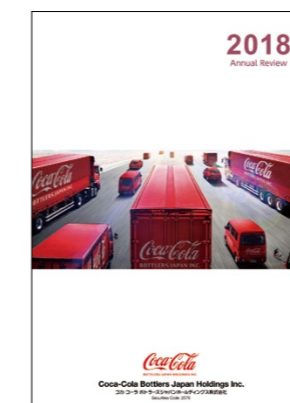


## Communication Tools

Through the timely and appropriate disclosure of information, we seek to be a company that is correctly understood and trusted by all of our stakeholders. We report financial information primarily using various IR tools, while reporting ESG information (non-financial information concerning the environment, society, and governance), the target of much attention in recent years, primarily through our CSV Report. We also report wide-ranging corporate information on our website.

### IR tools

Our IR tools report primarily financial information for our investors.



ANNUAL REVIEW



TO OUR SHAREHOLDERS (Biannual report to individual shareholders, Japanese version only)

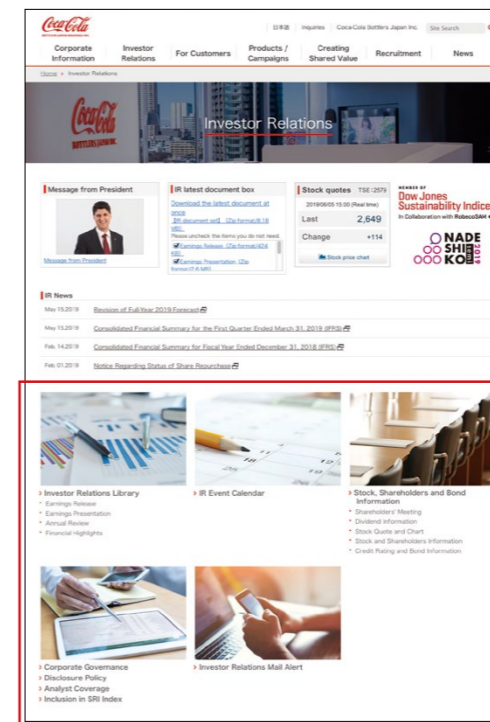
### CSV Report

We communicate information concerning sustainability to our stakeholders.



### Website for shareholders and investors

<https://en.ccbj-holdings.com/ir/>



Our website provides financial information, IR event schedules, IR materials, and other extensive IR information for shareholders and investors. We also provide timely earnings announcements, news releases, and other notifications to registered users.

Investor Relations Library	IR Event Calendar	Stock, Shareholders and Bond Information
<ul style="list-style-type: none"> <li>Earnings Release</li> <li>Earnings Presentation</li> <li>Annual Review</li> <li>Financial Highlights</li> </ul>		<ul style="list-style-type: none"> <li>Shareholders' Meeting</li> <li>Dividend Information</li> <li>Stock Quote and Chart</li> <li>Stock and Shareholders Information</li> <li>Credit Rating and Bond Information</li> </ul>
<ul style="list-style-type: none"> <li>Corporate Governance</li> <li>Disclosure Policy</li> <li>Analyst Coverage</li> <li>Inclusion in SRI Index</li> </ul>	<ul style="list-style-type: none"> <li>Corporate Governance Disclosure Policy</li> <li>Analyst Coverage</li> <li>Inclusion in SRI Index</li> </ul>	<ul style="list-style-type: none"> <li>Investor Relations Mail Alert</li> </ul>