

Company Profile / Stock Information (As of December 31, 2019)

Company Profile

Company name	Coca-Cola Bottlers Japan Holdings Inc.
Headquarters	Tokyo Midtown Tower, 9-7-1 Akasaka, Minato-ku, Tokyo, Japan
Establishment	December 20, 1960
Paid-in capital	JPY 15,232 million
Number of employees (consolidated)	16,959
Securities Code	2579
Authorized Shares	500,000 thousand shares
Outstanding Shares	206,269 thousand shares (Common share)*
Number of Shareholders	69,533
Number of Shares per Trading Unit	100 shares

*Outstanding shares of the Company are common shares only. The Company has not issued preferred shares nor any other types of shares which entail rights different from those of common shares.

Rating Information

	2015	2016	2017	2018	2019
Japan Credit Rating Agency, Ltd. (JCR) long-term issuer rating	AA-	AA-	AA-	AA-	AA-
Rating and Investment Information, Inc. (R&I) issuer rating	A+	A+	A+	A+	A+

Bond information

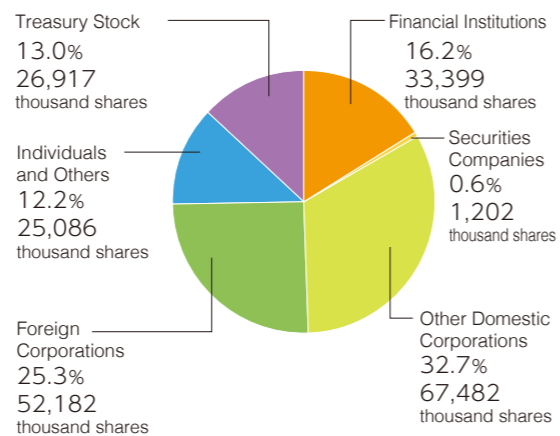
	Date of issue	Total amount issued (Million yen)	Coupon rate (%)	Maturity date
Coca-Cola West Co., Ltd. 3rd series	June 17, 2015	30,000	0.524	June 17, 2022
Coca-Cola East Japan Co., Ltd. 2nd series	December 14, 2015	16,000	0.276	December 14, 2020
Coca-Cola Bottlers Japan Holdings Inc. 1st debenture bond	September 19, 2019	40,000	0.100	September 19, 2024
Coca-Cola Bottlers Japan Holdings Inc. 2nd debenture bond	September 19, 2019	60,000	0.200	September 18, 2026
Coca-Cola Bottlers Japan Holdings Inc. 3rd debenture bond	September 19, 2019	50,000	0.270	September 19, 2029

Major Shareholders

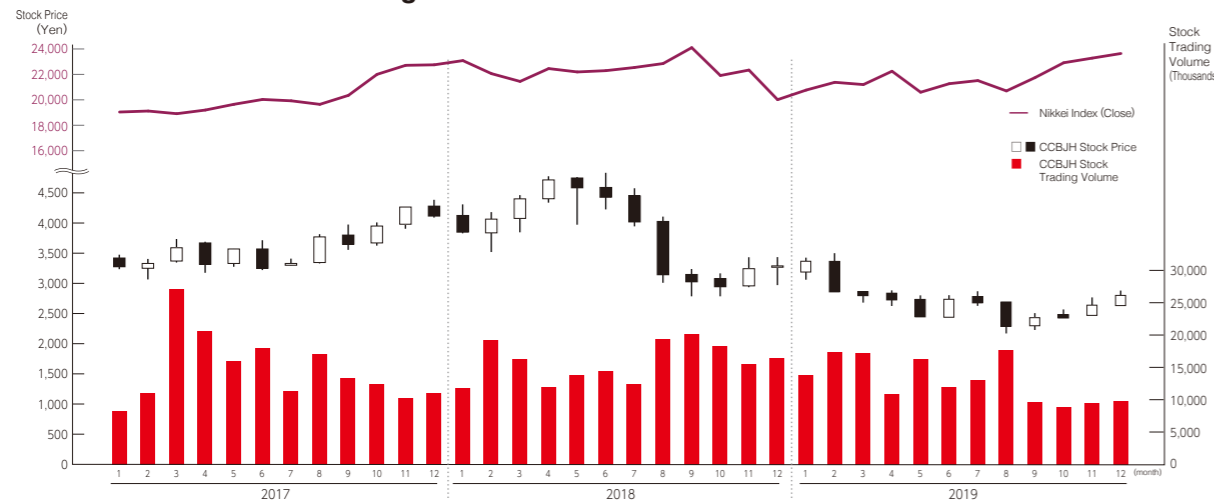
Shareholder	Number of Shares Held (Thousands)	Shareholding Ratio (%)
Coca-Cola (Japan) Co., Ltd.	27,956	15.6
The Master Trust Bank of Japan, Ltd. (Trust Account)	7,460	4.2
Ichimura Foundation for New Technology	5,295	3.0
STATE STREET BANK AND TRUST COMPANY 505225	4,725	2.6
Satsuma Shuzo Co., Ltd.	4,699	2.6
Senshusha Co., Ltd.	4,088	2.3
Coca-Cola Holdings West Japan, Inc.	4,075	2.3
Mitsubishi Heavy Industries Machinery Systems, Ltd.	3,912	2.2
Japan Trustee Services Bank, Ltd. (Trust Account)	3,747	2.1
MCA Holdings Co., Ltd.	3,408	1.9

Note1: 26,917 thousand shares of treasury stock are not shown in the table above and are excluded from the calculation of shareholding ratios.
 Note2: The Coca-Cola Company holds 18.8% through Coca-Cola (Japan) Co., Ltd., Coca-Cola Holdings West Japan, Inc., and other subsidiaries.

Composition of Shareholders



Stock Price and Stock Trading Volume



Communication Tools

Through the timely and appropriate disclosure of information, we seek to be a company that is correctly understood and trusted by all of our stakeholders. We report financial information primarily using various IR tools, while reporting ESG information (non-financial information concerning the environment, society, and governance), the target of much attention in recent years, primarily through our CSV Report. We also report wide-ranging corporate information on our website.



CSV Report

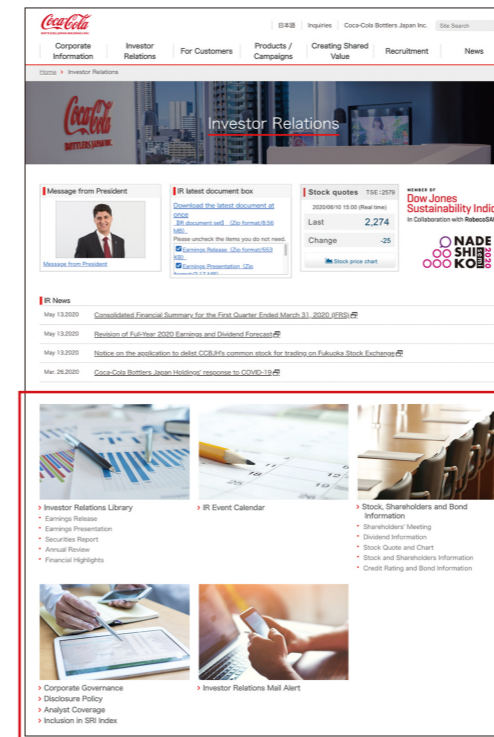


Annual Review



To Our Shareholders (Annual newsletter to individual shareholders, Japanese version only)

Website for shareholders and investors [<https://en.ccbj-holdings.com/ir/>]



Our website provides financial information, IR event schedules, IR materials, and other extensive IR information for shareholders and investors. We also provide timely earnings announcements, news releases, and other notifications to registered users. IR earnings presentations are conducted in both English and Japanese and archived for later review.

Investor Relations Library	IR Event Calendar	Stock, Shareholders and Bond Information
<ul style="list-style-type: none"> Earnings Release Earnings Presentation Securities Report Annual Review Financial Highlights 	<ul style="list-style-type: none"> Shareholders' Meeting Dividend Information Stock Quote and Chart Stock and Shareholders Information Credit Rating and Bond Information 	<ul style="list-style-type: none"> Shareholders' Meeting Dividend Information Stock Quote and Chart Stock and Shareholders Information Credit Rating and Bond Information
<ul style="list-style-type: none"> Corporate Governance Disclosure Policy Analyst Coverage Inclusion in SRI Index 	<ul style="list-style-type: none"> Investor Relations Mail Alert 	